



**BLR – Bollard Round**  
 Metal Halide Pulse Start 35 - 100 W  
 High Pressure Sodium 35 - 100 W  
 Fluorescent Quad Tube 26 - 42 W  
 LED 1 – 2 x 15 W



Dome Top

Flat Top

**DESCRIPTION**

The BLR series is an aesthetic and architectural series of round bollards for up to HID 100W, Fluorescent quad tube 1 x 42W or LED 2 x 15W applications. U.L. listed for wet locations.

**APPLICATION**

Suitable for lighting of walkways, pathways, plazas, pedestrian areas and near building entrances where an aesthetic clean look is desired.

**SOCKET**

Medium base, 4KV pulse rated porcelain socket for HID lamps. Positive latching thermoplastic socket for fluorescent lamps.

**HOUSING**

The main shaft is extruded aluminum and the top section is made of high pressure die cast aluminum. Available in Black (BLK), White (WHT) or Architectural Bronze (BRZ) polyester powder coat paint finishes for lasting corrosion resistance. Recessed vandal resistant screws provide a clean finished look.

Available in standard 42" height for Dome Top versions and 41" height for Flat Top versions. Can be custom manufactured to specified height

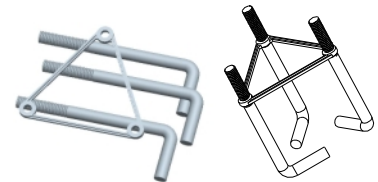
All versions include a clear polycarbonate lens with internal optics.

**OPTICAL**

Available in four versions.  
 IR – Internal Reflector (adjustable)  
 IL – Internal Louver  
 G3 – Glass with type 3 distribution  
 G5 – Glass with type 5 distribution  
 IR and IL versions are Dark Sky compliant.

**MOUNTING**

Mounting bracket with anchor bolts included.



**CATALOG NUMBER LOGIC**

<u>BLR-</u>	<u>MP</u>	<u>100-</u>	<u>120V-</u>	<u>427</u>	<u>DT</u>	<u>IR-</u>	<u>L</u>
Product	Lamp Type	Lamp Wattage	Voltage	Height, Dia	Top	Optical	Lamp
BLR = Bollard Round	MP = Metal Halide Pulse Start HP = High Pressure Sodium FL = Fluorescent quad tube LD = LED	(MH) 35, 50, 70, 100 (HPS) 35, 50, 70, 100 (FL) 26 = 26W 32 = 32W 42 = 42W (LED) 115 = 1 x 15W 215 = 2 x 15W	MT = Multi Tap 120/208/240/277V DT = Dual Tap 120/277V 120V = 120V	Dome Top 427 = 42" x 7" Flat Top 417 = 41" x 7"	DT = Dome Top FT = Flat Top	IR = Internal Refl. IL = Internal Louvers G3 = Glass Type 3 G5 = Glass Type 5	L = Lamp Included